

Economic

# Jazz

## Sewing and Quilting Machine

Like a fine-tuned instrument, the big and easy Baby Lock Jazz hits all the major high notes, putting impressive sewing range, style and accuracy at your fingertips, all at an affordable price. Plus, Jazz is so simple to play, it'll have you humming along on your compositions, double-time – in no time at all!

12"

Of Creative  
Space



28 Built-in  
Stitches



LED  
Lighting



Up to  
1,000 SPM



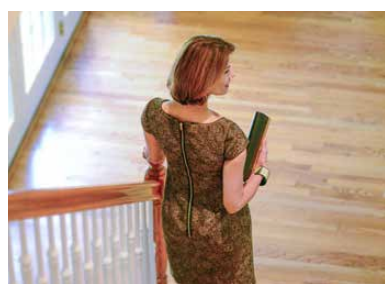
Built-In Needle  
Threader



**baby lock**

FOR THE LOVE OF SEWING

[www.BabyLock.com](http://www.BabyLock.com)





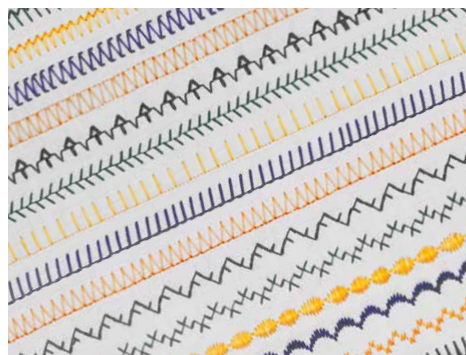
With a 12" workspace and its 1,000-stitch-per-minute tempo, the Baby Lock Jazz offers a big, easy place to finish all my quilt compositions. Its metal construction makes it the perfect workhorse for a professional like me, but it's straightforward enough that even a beginner can master the machine. How's that for range?

The Jazz does precisely what I need it to do, but at a price that easily allows me to also expand my fabric stash. The best part is that Baby Lock is always there to accompany me with superior service, no matter what I improvise. Now that's music to my ears!

*Jenny Doan*

Missouri Star Quilt Co.

## The Big & Easy



### 28 Built-In Stitches

With 28 built-in stitches, including a one-step buttonhole and a maximum stitch width of 7 mm, Jazz is well-equipped to take your creativity to new heights.

### 1,000 SPM

Keep a quick and steady tempo of up to 1,000 stitches per minute. Jazz is as fast as it is accurate.



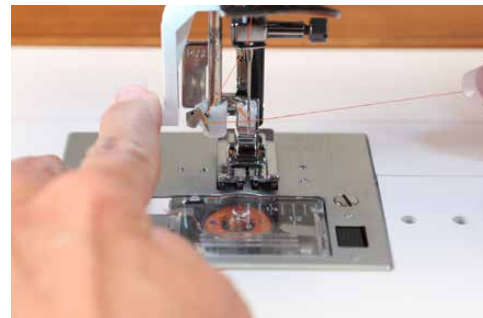
### 6 LED Lights

The built-in LED lights illuminate the Jazz's needle and work area so you can clearly view every last stitch.



### Quick-Set, Top-Loading Bobbin

No more struggling with bobbin changes midway through a project. Simply drop in a new bobbin, pull your thread through the guide and Jazz does the rest.



### Built-In Needle Threader

Flawlessly thread your machine every time, so you can get up and running quickly.



### Stitch Width and Length Dials

A visual guide helps you quickly dial in stitch width and length adjustments.



### Automatic Bobbin Winder

The built-in bobbin winder seat holds your thread in place and then stops automatically when the bobbin is full. It couldn't be easier.



### Free Arm

With the Jazz machine's free arm, you can sew enclosed items, curved pieces and other tight spaces just as easily as large projects.

### Snap-On Presser Feet

Switch from one specialized accessory foot to another in a snap.



### Hands-Free Presser Foot

Keep both hands free for sewing large quilts. Start and stop your sewing without ever taking your eyes—or hands—off your project.

## Included Accessories

9 feet (8 are snap-on)  
Quilting Guide  
Bobbins (4)  
Vertical spool pin

Seam ripper with brush  
Screwdrivers  
Machine dust cover  
And more



### Stitch Indicator Window

Select from 28 different built-in stitches and view your selected pattern in the Stitch Indicator Window.



# Features and Specifications of the Jazz

## Key Quilting and Sewing Features

- 12" Workspace to the right of the needle
- Sews up to 1,000 SPM
- 28 Built-in stitches including a one-step buttonhole
- 6 LED lights that illuminate the needle and work area
- Pattern selection and dial indicator window
- Stretch stitch capabilities
- Maximum utility stitch width: 7 mm
- Stitch length 0.0 mm – 4.0 mm
- Thread tension dial
- Needle threader
- Hands-free presser foot
- Drop feed for free-motion stitching
- Needle plate with markings in inches and millimeters
- Heavy-duty metal casting

## Convenience Features

- Presser foot pressure adjustment
- Variable needle with 24 positions
- Twin needle sewing capabilities with straight stitch
- Quick-set, top-loading bobbin
- Built-in bobbin winder
- Free arm
- Side thread cutter
- Easy access stitch length and width dials
- Color-coded stretch stitch settings
- Fine tuning buttonhole adjustment
- Easy-to-read stitch reference chart
- Threading reference diagrams on inside cover
- Reverse sewing lever
- Thumb screw holes for compatibility with optional attachments
- Accessory tray with two storage compartments
- Electronic foot control and power cord

## Included Accessories

- Knee lifter
- 9 feet (8 are snap-on)
  - o Buttonhole
  - o Overcasting
  - o Open Toe
  - o Zipper
  - o Straight Stitch
  - o Darning/Free-Motion (screw-on)
  - o 1/4" Quilting
  - o General Purpose/Zig Zag
  - o Blind Hem

- Quilting Guide
- Bobbins (4)
- Vertical spool pin
- Seam ripper with brush
- Screwdrivers
- Machine dust cover
- And more

## Optional Accessories

- Jazz Trolley (BLJMT)
- Extension Table (BLMJZ-ET)
- Walking Foot (BLG-WF)
- Fabric Guide (BLES8-FG)
- 28 mm Single Fold Bias Binder (BLE8-S4)
- 28 mm Double Fold Bias Binder (BLE8-S3)
- 3/4" Belt Loop Binder (BLE8-S12)

## Warranty

- 25-year limited manufacturer's warranty
- 10-year parts
- 5-year electrical
- 1-year labor
- Ask your Baby Lock Retailer about machine maintenance programs.

## Additional Information

- Machine weight:  
27.5 lbs. (12.5 kg); Gross weight 36.4 lbs. (16.5 kg)
- Machine Dimension:  
25.2" x 9.45" x 12.2" (64 cm x 24 cm x 31 cm)

