

Sharman's Sewing Centers

112A Johnston St.
Longview, TX 75601
903-753-8014

6005 S. Broadway
Tyler, TX 75703
903-581-5470

www.sharmanssewingcenter.com

April 2021 Sewing Club

Drawstring Backpack for Kids & Teens

There are many opportunities to sew for charity and this bag is a great project. From Kids in Foster care who have nothing to carry their possessions in, Back to School bags with supplies, Operation Christmas boxes, Gifts to take on Mission Trips and more!!! You may even have a need that we have not thought of. There are 2 sizes Kids & Teen/Adult. Pockets are optional – but allow for some creativity and more storage. Great way of using your stash and helping others.



Supplies Needed:

Supplies	Kid's Size	Teen/Adult Size
Bag Body	2 – 13" x 16" Rectangles of Woven Fabric	2 – 16" x 19" Rectangles of Woven Fabric
Optional Pockets	2 – 13" x 10" Rectangles of Woven Fabric	1 – 16" x 12" Rectangles of Woven Fabric
!4" – 3/8" Elastic for Pockets	10" of Elastic	12" of Elastic
Optional Pocket Trim (rick rack, ribbon, piping, beads)	13" Trim	16" Trim
Straps	3 yds or 108" (2 – 54" pieces)	4 1/2 yds or 162" (2 – 81" pieces)

- Thread to Coordinate
- Sewing Machine in Good Working order
- New Needle 90/14 Universal or Jeans)
- Optional Serger – 4 thread seam – neutral thread colors
- Cutting Tools – Scissors & Rotary Cutter & Board
- General Sewing Supplies
- Clover™ 3/4" Fusible Bias Tape Maker™
- Adjustable Bias Binder Foot for your machine
- Optional – Clover™ Hot Ruler



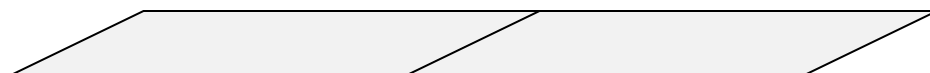
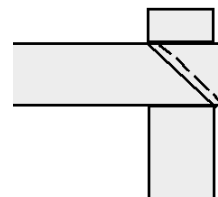
Making the Straps:

There are several ways you can make the straps for this project:

- ★ Purchased Bias Tape (will take 1 – 2 packages per project – could get costly)
- ★ **Make your own with Bias Tape Maker and Adjustable Bias**

Binder Presser Foot (this is a great time to use a neutral – maybe darker fabric- and make a several straps at one time)

- This can be bias strips of you have left over binding or just cut straight of the grain – Kid's size will need 2 1/2 - 1 1/2" x wof strips per bag and Teen/Adult's will need 4 strips of 1 1/2" x wof strips per bag. (1 yd of fabric will yield 24 strips)
- Sew your strips end to end – preferable at an angle seam.



Sharman's Sewing Centers

112A Johnston St.
Longview, TX 75601
903-753-8014

6005 S. Broadway
Tyler, TX 75703
903-581-5470

www.sharmanssewingcenter.com

- Press with a Clover $\frac{3}{4}$ " Bias Tape maker (even though the title say's Fusible and Bias – we don't have to use the fusible and strip does not have to be bias) This will fold the edges to the middle and you will be at $\frac{3}{4}$ " wide.
- Now press in half again lengthwise – with the edges to the middle
- Load the Binding in to the Adjustable Bias Binder Presser foot – adjust guide to hold the binding in place. Stitch the binding together with either a straight stitch or for strength – 2 step zig zag – 3 mm wide. Stitch strips together to make the straps
- When finished – cut to desired lengths



★ Belt Strap guide for Cover Stitch Serger

- The $\frac{3}{4}$ " Belt Loop Guide will screw on to the cover stitch table of the Serger.
- Cover stitch will be set for 2 thread wide or 3 thread cover.
- Cut strips the width of the foot instruction sheet
- Sew strips together – end to end – piece at an angle (this will go thru the foot better)
- Load the strip into the guide – Right side facing up. Make sure the guide lines up with the needles and guides the fabric strip into the foot (no space between guide and presser foot)
- Sew – the guide should turn the edges to the back side and catch the raw edges in the over stitching.



★ Double Fold Binding Guide for Coverlock Sergers or Select Pfaff Sewing Machines

- It is a special guide that screws down to the Coverlock table or to the bed of the Select Pfaff Sewing machines (Machines must have the correct screw holes on the needle plate for this to work – will not work on all models).
- For the Baby Lock Serger – use the 10mm guide for this project. The strips will be cut $1 \frac{5}{8}$ " wide.
- Stitch the strips together – end to end at an angle. Press.
- Cut the end that you will feed into the guide at a 45-degree angle.
- Guide the strip working from right to left thru guide – with the wrong side of the fabric facing you. You may find a pair of tweezers help with this. At the end of the guide – the fabric will make a 90-degree turn into the sewing machine. The guide can be adjusted from left to right with the mounting screws to control where the binding hits under the presser foot.
- Start sewing – the feed dogs of the machine will pull the fabric thru the guide and thru the machine. Run at a medium speed to allow for all the folding that is going on in the guide.



Sharman's Sewing Centers

112A Johnston St.
Longview, TX 75601
903-753-8014

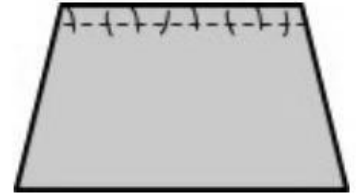
6005 S. Broadway
Tyler, TX 75703
903-581-5470

www.sharmanssewingcenter.com

Making the Pocket:

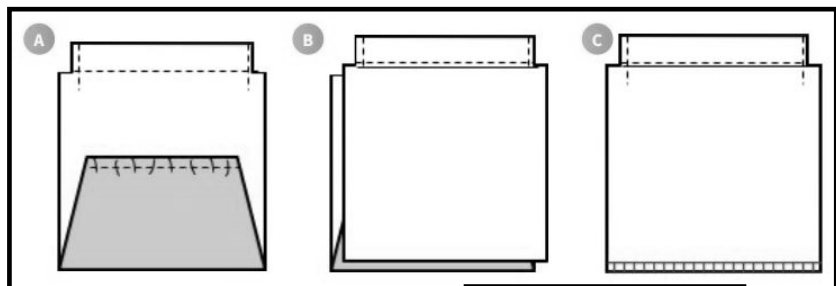
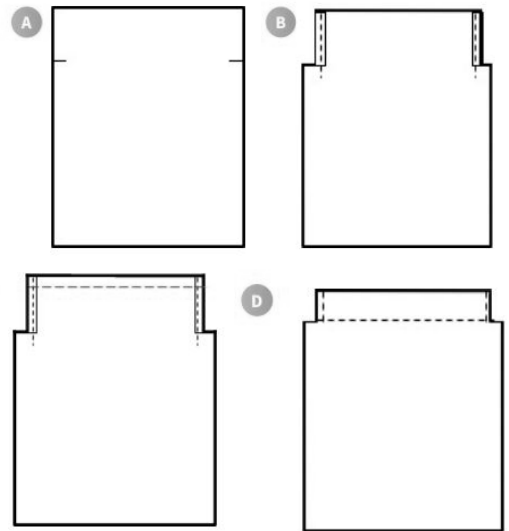
The Pocket is optional – but adds extra storage and allows you to be creative.

1. Have fun with the pockets – you can piece strips together for decoration, add embroideries, add Rick Rack or Ribbon Trim, use contrasting colors – be creative.
2. Sew the front pocket to Lining – right sides together - along the top edge (Rick Rack, piping, beading or trim could be added to seam if desire).
3. Fold the pieces – right sides out and press.
4. Topstitch the folded edge
5. You will need to add elastic to the upper edge of the pocket to keep items in the pocket better. Here are 2 options:
 - a. Topstitch a casing line below the edge topstitch.
Run the elastic into the casing – tacking down at both ends
 - b. If you prefer to do in one step – tuck the elastic between the fabric pieces and tack down at the far edge. While stretching the elastic – stitch the casing down right beside it. Tack down at the other end.
6. Baste the other 3 sides of the pocket together. Set aside



Making the Bag:

1. Place bag body pieces – right sides together
2. At top Edge – Measure down 2 ½” – thru both layers make a cut ½” in from the edge on both sides. (see diagram A)
3. On each side of each piece - roll and press the 2 ½” long flap in twice to the wrong side. Topstitch the hem in place and extend the stitching about ½” below the flap to give this area extra reinforcement. (see diagram B)
4. With the Iron and Clover Hot Ruler – Press ¼” of the top to the back on both pieces. Press. (see diagram C)
5. Press the folded edge to the wrong side even with the clips you made.
6. Topstitch the casing near the edge. (see diagram D)
7. Now baste the Pocket in place on the lower edge of the front
8. Place front to back – right sides together and stitch the bottom seam.



Lower Bag Seam

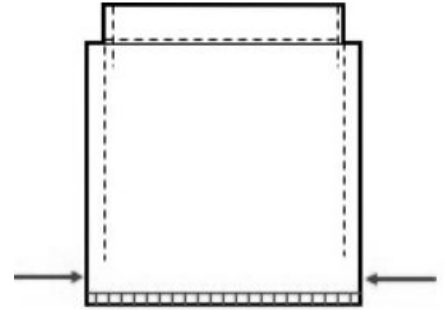
Sharman's Sewing Centers

112A Johnston St.
Longview, TX 75601
903-753-8014

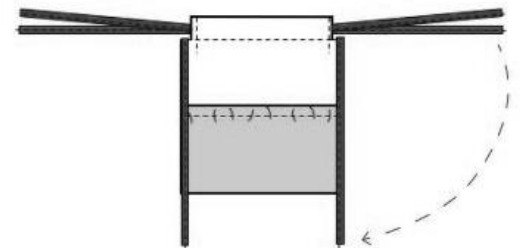
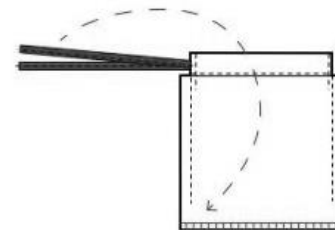
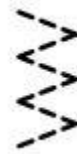
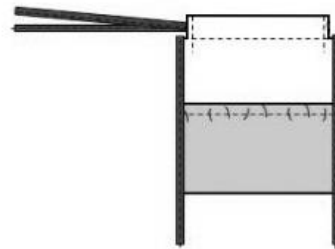
6005 S. Broadway
Tyler, TX 75703
903-581-5470

www.sharmanssewingcenter.com

9. Sew the side seams – leaving about a 1” opening on both sides
10. Turn right sides out.



11. Take one strap – go into the front casing from one side to the other – make a “U-turn” and go back thru the back the opposite direction. Both ends of that strap should be on the same side.
12. Match the ends of the strap together – and tuck into the opening on that side – side seam.
13. Reach into the middle – grab the strap ends and finish sewing the side seam catching the strap ends.
14. Repeat the same steps on the other side.
15. Turn the bag – wrong sides out again.
16. Now you can finish the raw edges of the seams – either 3-Step Zig Zag the edges or Run it thru the serger to finish the edges.
17. Turn right sides out
18. Press.



©2021 Baby Lock USA. This project may be freely used by individuals for non-commercial purposes. Project instructions may not be sold or distributed without approval from Baby Lock. Baby Lock must be acknowledged as the source of the project instructions through copyright or online link.